



Cushion
MATS

**PLAIN & DESIGN
CARPETS**



**WOODEN / VINYL
FLOORING**

**VENETIAN & VERTICAL
BLIND**



**WALL PAPER
&
FILM**



A. K. INTERNATIONAL

12/1, S. A. ALI AVE., KOL. - 17, PHONE : 2281-7518, 2280-9034/ 9830117275



Elegance & Comfort in Modern Living



MONT BLANC - 8312 MOON ROCK



MONT BLANC



MONT BLANC - 6310 WICKER



MONT BLANC - 6311 SAFARI

MONT BLANC - 6318 MONTANA GRAPE

MONT BLANC Specifications

Construction	1/12" Tufted Textured Loop Pile
Fibre	100% BCF Solution Dyed Synthetic
Pile Weight	ca. 815g/m ² (24 oz/y ²)
Total Weight	ca. 6250g/m ² (185 oz/y ²)
Pile Height	ca. 4mm (high), 3.5mm (low)
Total height	ca. 7mm
Backing	PVC / Glass Fibre Spunbonded
Size per Tile	50x50cm
Tiles per Box	20 pc (5 m ²)

Warranties

10-year Carpet Wear Warranty
Lifetime Antishock Carpet Warranty
Quality Certificate ISO 9001

Ideal for Medium Commercial Use.

Performance (as tested by ITTS Inc. USA)

Stain Resistance	5.0 (AATCC-175-1993)
Static Generation	Permanently antistatic
Tuft Bind	6.5 lbs (ASTM-D-1335)
Dimensional Stability	Max 2.4% change (AACHEN)
Flammability	
Radiant Panel	Class 1 (ASTM-E-648)
Pill Test	Self-extinguishing (ASTM-D-2859)
Smoke Density	Max 450 (ASTM-E-662)
Colourfastness	
to light	5 (AATCC-16E)
to wet & dry cleaning	5 (AATCC-16S)
to Ozone	5 (AATCC-129)

Environment

The design and production of Mont Blanc Tile conforms to the ISO 14001:2004 Environmental Management System and complies with environmental regulation.

Mont Blanc Tile is an environmentally friendly "green" carpet.



Recommended Laying Method



Monoblock Quarter Turn



6310 WICKER



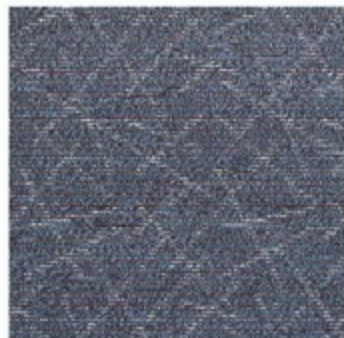
6311 SAFARI



6312 MOON ROCK



6314 STAR SAPPHIRE



6318 MONTANA GRAPE

MONT BLANC

MONT BLANC PROJECTS



MONT BLANC - 6311 SAFARI
Bank Office at Shenton Way Singapore