



Cushion
MATS

**PLAIN & DESIGN
CARPETS**



**WOODEN / VINYL
FLOORING**

**VENETIAN & VERTICAL
BLIND**



**WALL PAPER
&
FILM**



A. K. INTERNATIONAL

12/1, S. A. ALI AVE., KOL. - 17, PHONE : 2281-7518, 2280-9034/ 9830117275



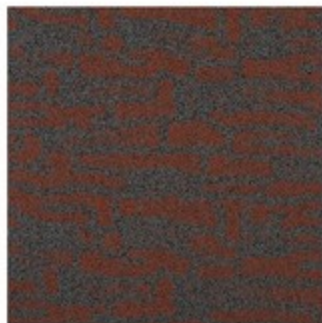
Elegance & Comfort in Modern Living



TERRANOVA - OREGON



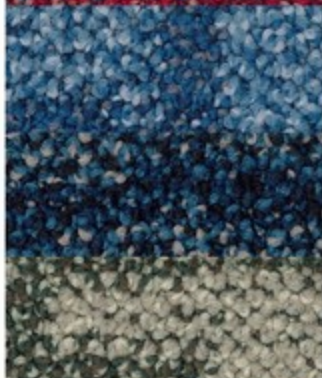
235 CAMEL



313 TERRA COTTA



355 RED



500 OCEAN



552 PACIFIC BLUE



617 CELADON



830 MAROON



965 ANTHRACITE



991 BLACK



TERRANOVA - 552 PACIFIC BLUE



TERRANOVA - 552 PACIFIC BLUE



TERRANOVA - 355 RED

TERRANOVA - OREGON Specifications

Construction	1/10" Tufted Loop Servo Scroll
Fibre	100% Fabelleon CS [®] Premium Solution Dyed Nylon
Pile Weight	ca. 850g/m ²
Total Weight	ca. 4800g/m ²
Pile Height	ca. 3.1mm
Total Height	ca. 7mm
Pile Density	ca. 0.148g/cm ³
Tuft Density	ca. 157,600g/m ²
Backing	T-flex Supra [®]
Size per Tile	50x50cm
Tiles per Box	20 pc (5 m ²)

Warranties

10-year Limited Carpet Wear Warranty
Ideal for Heavy Contract Use

Recommended Laying Method



Monodirigal Ashlar Brick



Manufactured in Belgium, E.E.C.

Performance

Flammability	M3 (NFP 92-506), B1 (DIN 4102), A3 (NBN 521-203)
Static Generation	Antistatic <2kV (PrEN 1815)
Colourfastness	
to light	> 7 (ISO 105-B02)
to wet cleaning	> 4 (ISO 105-E01)
to rubbing	> 4 (ISO 105-X12)
Thermal Resistance	0.057 qm K/W (ISO 8302)
Impact Noise Rating	26 dB (ISO 140-8)
Transversal Resistance	< 10 ⁸ Ohm (ISO/DIS 10965)
Dimensional Stability	Max. - 0.2% (EN 986)

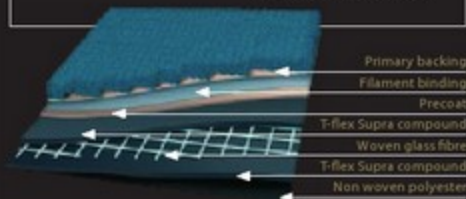
Environment

The design and production of Terranova - Oregon Tile conforms to the ISO 14001:2004 Environmental Management System and complies with environmental regulations.

Terranova - Oregon Tile is an environmentally friendly "green" carpet.

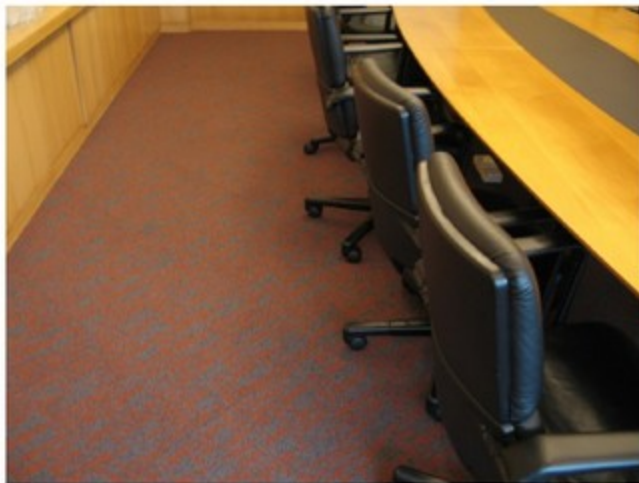
T-flex Supra[®] comprises of 4 layers: non-woven polyester, T-flex compound, woven glass fiber & T-flex composite. This is superior to PVC, ordinary Bitumen or EVA Foam backings. It is more flexible and less sensitive to heavy wear & temperature fluctuations.

The backing is first extruded separately and online, then the preheated and relaxed carpet is laminated onto the backing. Equal tension on backing and carpet when put together, results in higher dimensional stability.



TERRANOVA - OREGON

TERRANOVA - OREGON PROJECTS



TERRA NOVA OREGON - 313 TERRA COTTA
Office at Serangoon North Ave. Singapore



TERRA NOVA OREGON - 552 PACIFIC BLUE
Overseas Library Project



TERRA NOVA OREGON - 552 PACIFIC BLUE
Office at Serangoon North Ave. Singapore

